

# Schüco Living

PVC-U system for windows and doors



## The new system generation for the efficient construction of pioneering PVC-U windows and doors

A new level of flexibility, efficiency and process reliability during fabrication and installation, the highest standards in terms of comfort and security as well as various options for design and construction – the new PVC-U system from Schüco combines many benefits in one product. The 82 mm construction impresses not only with a world first in integrated sealing technology, but also sets standards in terms of energy efficiency.



Schüco LivIng offers a wide variety of options, with the most exacting demands in terms of comfort, security, energy efficiency and design.

## Flexibility and efficiency in fabrication and installation



The new PVC-U window and door system Schüco LivIng impresses with its simple, efficient and flexible fabrication, thereby significantly increasing process reliability in fabrication and installation. The system is available with a rebate gasket or centre gasket and is suitable for glass thicknesses of 24 to 52 millimetres to suit customer requirements. The ingenious design means that fabricators save time and money during planning, ordering, fabrication and installation. The Twin System technology, with its

uniform sealing concept and identical fittings components, not only serves to reduce the number of parts and lower storage costs, but it also simplifies the ordering process as a whole. Further design details – such as identical vent profiles for rebate and centre gaskets, a corresponding rebate base geometry and identical steel reinforcements in the outer frame, vent frame and double-vent profiles – also increase use of the same parts and enable a more efficient fabrication process.

## World first for sealing technology



Exclusive sealing technology from Schüco stays soft and elastic in the crucial corner area, even after welding.

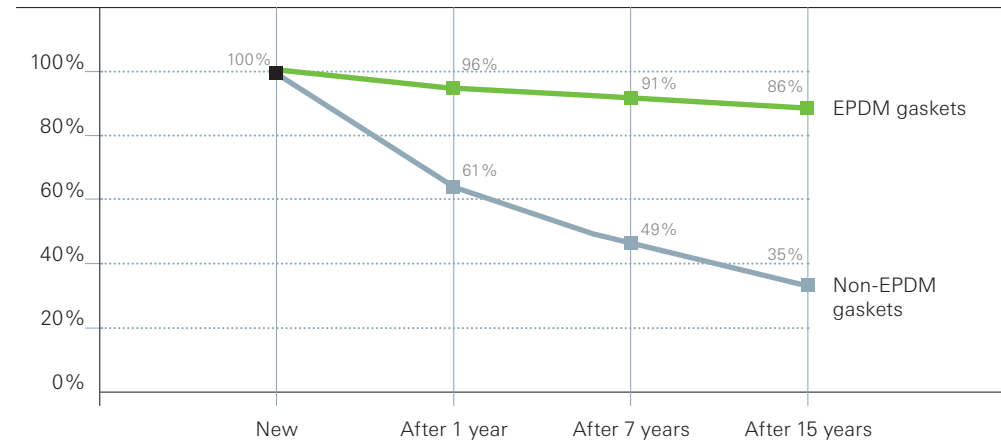


Conventional sealing technology forms hard corners when welded. This results in a loss of elasticity and hence reduced weathertightness.

Together with its new development partner, Semperit, Schüco has created the first weld-on EPDM gasket for windows and doors, which is now available exclusively to Schüco partners. The use of elastic, weld-on material increases the sealing effect in the difficult corner area of the unit, whilst also ensuring a closed, visually appealing corner design without hard weld seams.

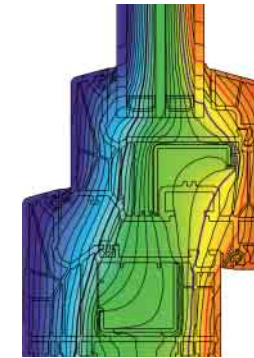
The durable, eco-friendly material keeps a tight seal throughout its entire service life, which results in fewer complaints and the building retaining its value. UV-resistant and stable in cold temperatures, the EPDM gaskets are suitable for all climate zones and building types, guaranteeing permanent elasticity across temperatures from -40 to +120 °C.

**The comparison of the recovery properties\* of Schüco EPDM gaskets and non-EPDM gaskets** clearly shows that the high-quality material of the EPDM functional gaskets keeps a tight seal throughout its entire service life and therefore retains its positive characteristics in respect of draught, cold, moisture and noise. The non-EPDM gasket already loses an enormous amount of elasticity in the first few years and becomes brittle. After around 7 years, the sealing effect is down to around 50%.

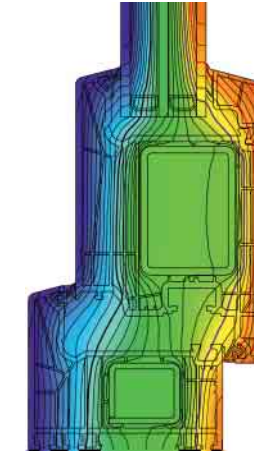


\*Behaviour of a gasket in the event of recurrent compression, e. g. opening and closing of the window. The optimum outcome is a recovery of the original contours, because only this guarantees a long-lasting tight seal.

## Outstanding energy efficiency and security



Isothermal flow Schüco LivIng 82 MD



Isothermal flow Schüco LivIng AS front door

Schüco is also setting standards in energy efficiency with the new series for windows and doors. Thanks to its 7-chamber profile construction, Schüco LivIng achieves outstanding  $U_i$  values with a basic depth of 82 mm: to 1.0  $W/(m_2K)$  with the rebate gasket option and to 0.96  $W/(m_2K)$  as a centre gasket system.

Moreover, if the special adhesive vent is used and the glass is bonded, an even better thermal insulation of the elements can be achieved. This means that passive houses are possible without expensive additional measures.



With the latest fittings technology up to RC 2, Schüco LivIng window and door units can be made secure.



Optional lockable handles allow the vent to be closed securely.

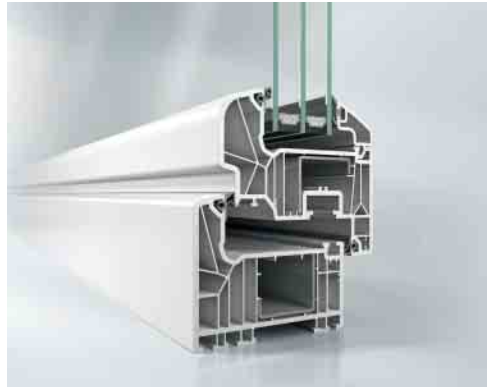
Schüco also provides tailored fitting options for security technology. Windows and doors from the Schüco LivIng range can be designed up to resistance class 2 (RC 2). The possibility of bonding to the glass ensures additional protection.

# A wealth of possibilities

## Schüco Living Rondo

The round softform lines of the Rondo window vent reduce the face widths of the already narrow profile contours.

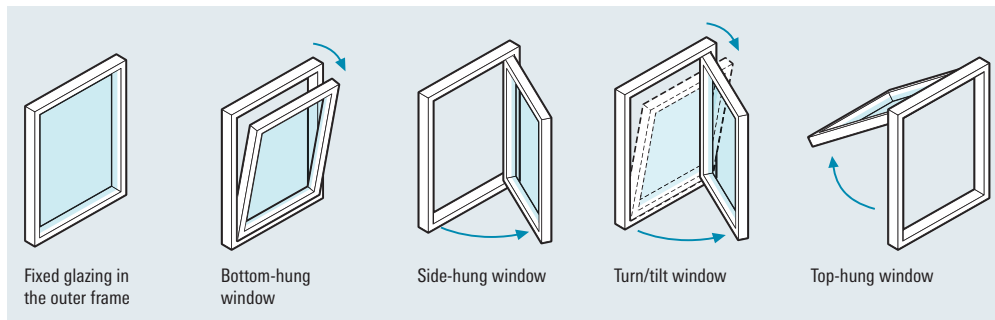
The curves also increase the self-cleaning capability of the profiles and reduce the cleaning cycles.



To meet the trend for different shades of grey in the architecture, Schüco Living is now also available with a grey basic structure. This ensures a harmonious look, in particular when the window is open.

Schüco Living is a complete system with many different options for attachment and supplementary profiles. Whether for residential or commercial projects, newbuild or modernisation, the new Twin System meets the individual requirements of the clients. In addition to windows, window doors and balcony doors, tilt/slide doors, side entrance doors and front doors can also be constructed – including storey-height designs.

The choice of colours also fulfils every requirement. The exclusive Schüco AutomotiveFinish surface finish technology provides Schüco Living windows and doors with a brilliant metallic design, which is only matched elsewhere by the automotive industry. The range of Schüco foils comprising more than 200 single colours and woodgrains, as well as aluminium cover caps from the Schüco TopAlu series, cover all the RAL and anodised colours and offer a wide variety of design options.



With individual designs that meet the highest standards in terms of security and comfort, Schüco Living combines many benefits into a single product.

Technical information	Schüco Living 82 AS	Schüco Living 82 MD
<b>Dimensions</b>		
Basic depth of outer frame	82 mm	82 mm
Basic depth of vent frame	82 mm	82 mm
Possible glazing thickness	24 mm – 52 mm	24 mm – 52 mm
<b>Tests and standards</b>		
Thermal insulation in accordance with DIN EN 12412-2*	$U_i = 1.0 \text{ W}/(\text{m}^2\text{K})$	$U_i = 0.96 \text{ W}/(\text{m}^2\text{K})$
Sound reduction in accordance with DIN EN ISO 140-3 (maximum)*	$R_{w,p} = 47 \text{ dB}$	$R_{w,p} = 47 \text{ dB}$
Burglar resistance in accordance with DIN EN 1627	RC 2	RC 2
Air permeability in accordance with DIN EN 12207 (Class)	4	4
Watertightness in accordance with DIN EN 12208 (Class)	9A	9A

\*Dependent on profile and glazing





## Schüco LivIng



**With the Schüco LivIng system, you can experience a new level of flexibility, efficiency and process reliability during fabrication and installation.**

The innovative Twin system with the world's first weld-on EPDM gasket, for which a patent is pending, facilitates efficient fabrication for you. For pioneering windows and doors – exactly to your requirements.

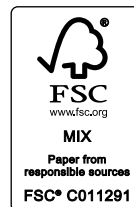
### Schüco Polymer Technologies KG

[www.schueco.com](http://www.schueco.com)

The latest from the social networks at:  
[www.schueco.de/newsroom](http://www.schueco.de/newsroom)

### Schüco – System solutions for windows, doors and façades

Based in Bielefeld, the Schüco Group develops and sells system solutions for windows, doors and façades. With more than 4900 employees worldwide, the company strives to be the industry leader in terms of technology and service today and in the future. In addition to innovative products for residential and commercial buildings, the building envelope specialist offers consultation and digital solutions for all phases of a building project – from the initial idea through to design, fabrication and installation. 12,000 fabricators, developers, architects and investors around the world work together with Schüco. The company is active in more than 80 countries and achieved a turnover of 1.575 billion euros in 2017. For more information, visit [www.schueco.com](http://www.schueco.com)



# SCHÜCO