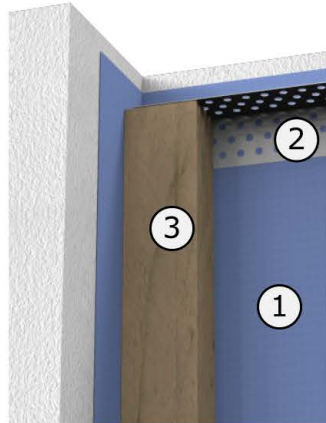
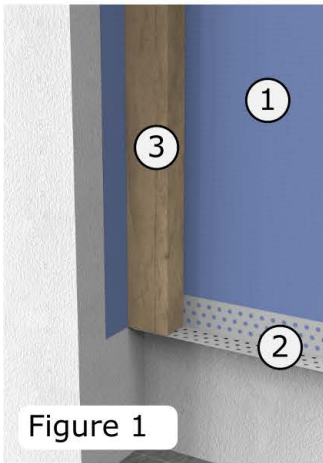


Vertical Cladding - Typical Installation Sequence

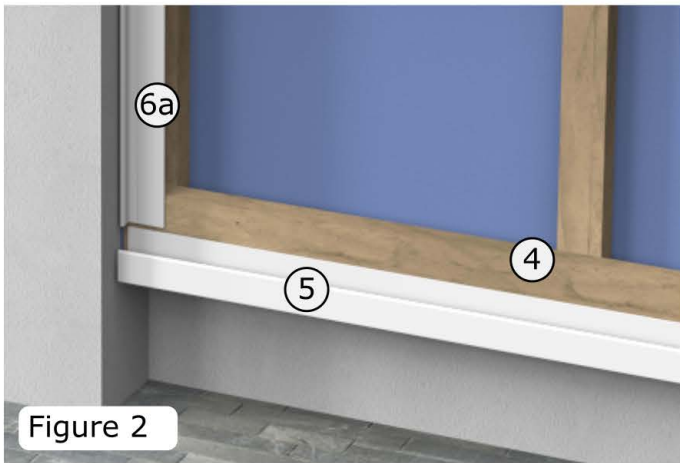


Fix a suitable breather membrane (1) to substrate in accordance with manufacturer's instructions.

Fix insect mesh (2) to wall, 150mm from the ground and at top of installation area to provide suitable ventilation top and bottom.

Note: if cladding up to a soffit, ensure that a 5mm gap is left so the ventilation path is maintained.

Fix vertical battens (3) to substrate at 400mm c/c. The vertical battens will provide a continuous vertical ventilation cavity.

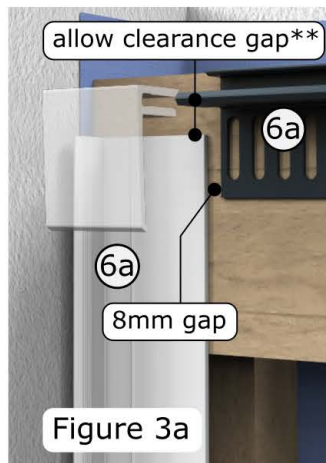
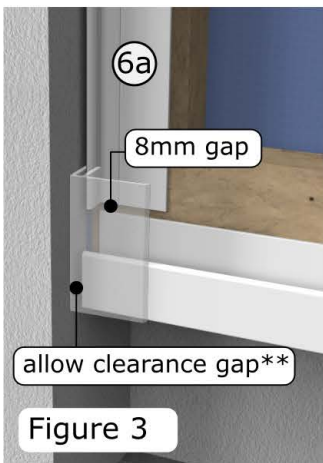


Fix horizontal battens (4) to vertical battens at 400mm c/c. Fit double battens at top and bottom.

Fix 'J' trim (5) as starter trim*. Drill holes in the trim to facilitate water drainage. Holes should be 10mm dia @ 100mm c/c.

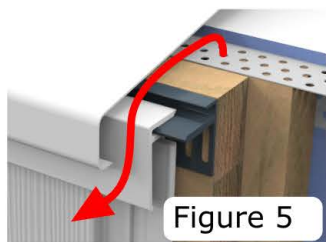
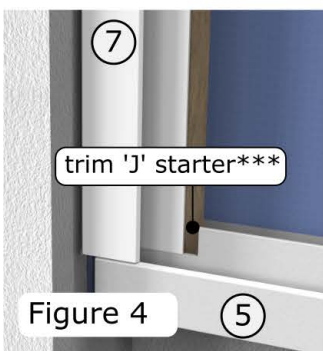
Fix Single Part Trims and/or first part of 2 Part Trims* (6a) as necessary. Do not cut second parts of 2 part trims to length yet.

* Always leave 8mm gap at the ends of trims to allow for expansion. See figures 3 and 4.

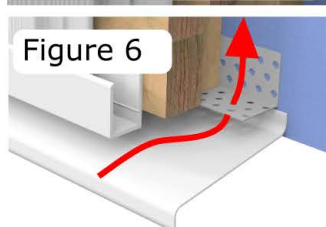


** Allow clearance gap so that the cover trim can be fitted to the vented closer.

note: the ventilated trim (6a) is not required for ventilation but it allows the closer trim to cover the edge trim which provides a neater finish. see figure (13)



*** If using a 'J' edge trim (7) the 'J' starter (5) will need to be trimmed. see figure 4 the ventilation gap can be omitted here if you double the ventilation at the top to 16mm.

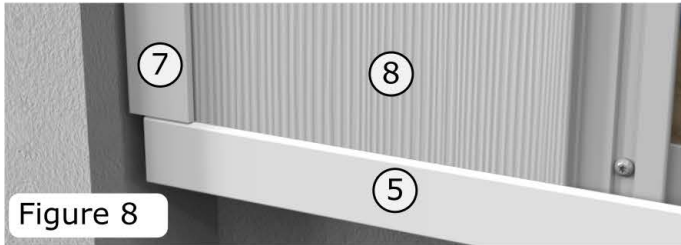


Ventilation path should be maintained at Window cills and heads. see figures 5 & 6.



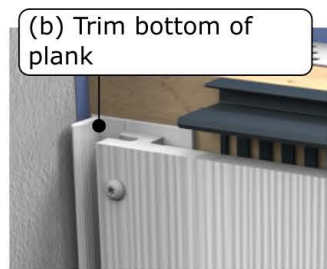
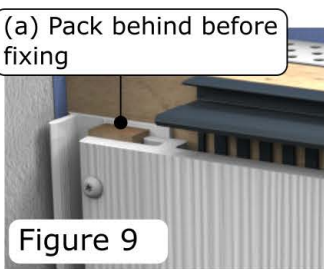
2 Part Edge Trims

Fit first Cladding Plank (8) down into 'J' starter (5) and on to part 1 trim (6a) and screw fix through the fixing channel into the cladding batten.



'J' Trims

Fit first Cladding Plank (8) down into 'J' starter (5) and into 'J' edge trim (7) and screw fix through the fixing channel into cladding batten. If 'J' edge butts tight to 'J' starter, increase expansion at opposite end to 16mm (the closer can accommodate this).



Either pack behind the nose of the cladding before fixing (a) or trim the bottom of the plank and screw through the hook (b).



The starting edge of the cladding does not need to be screwed if fixed into a 'J' Trim. (7)



When all cladding is fixed, cut second parts of 2 part trims to length and clip into place.

